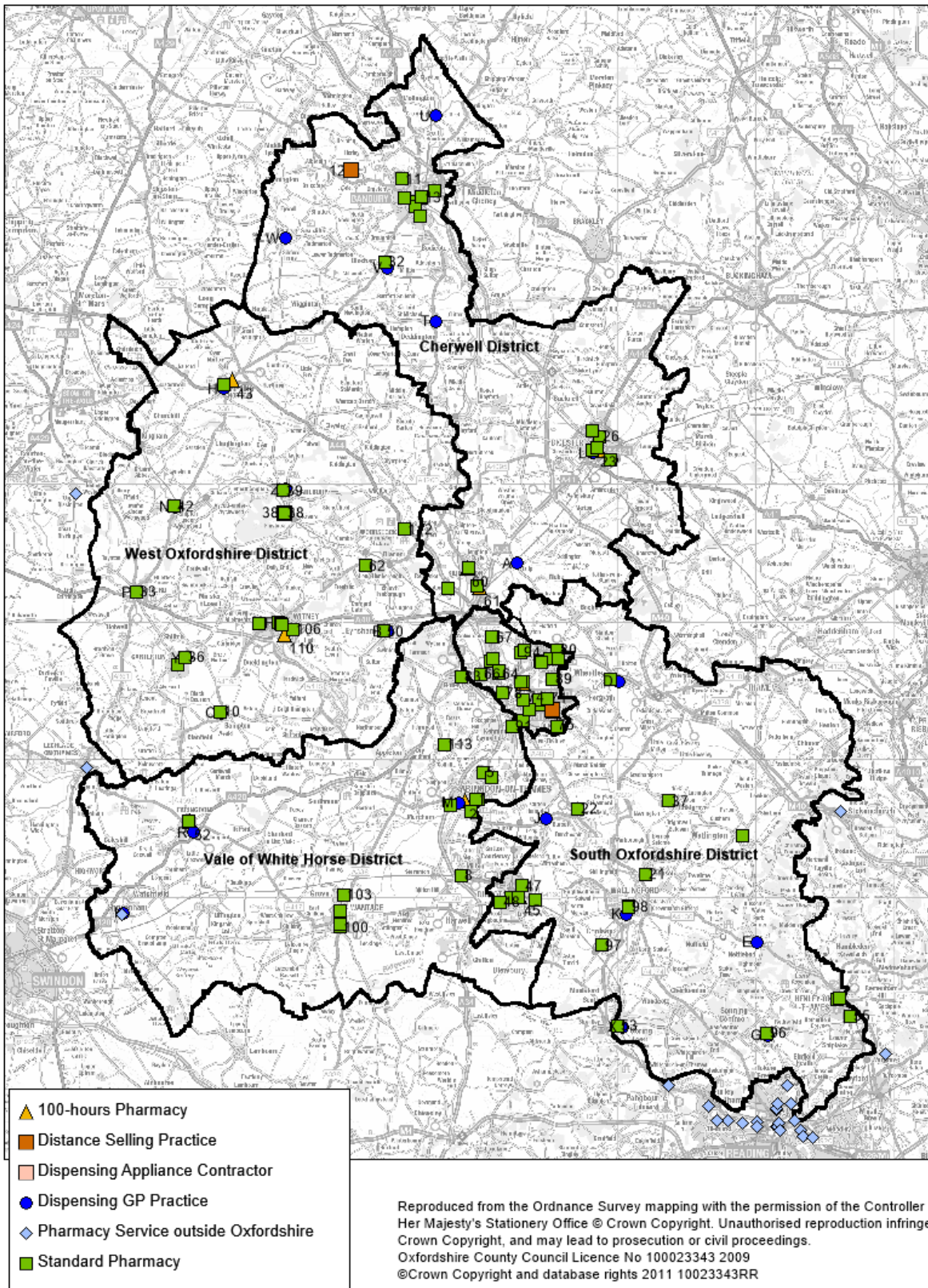
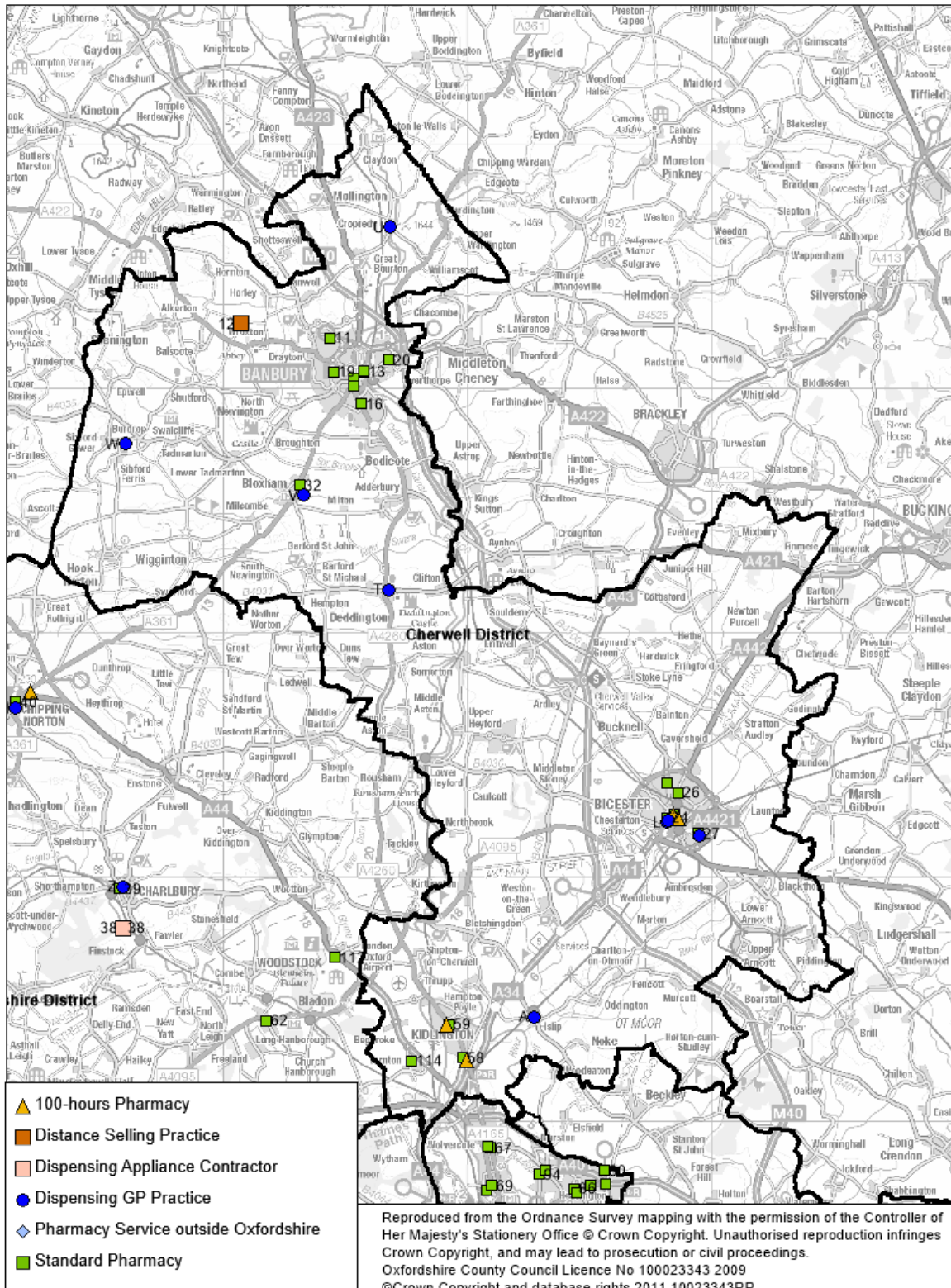


Map 1 - Pharmaceutical Services in Oxfordshire



Map 2 - Pharmaceutical Services in Cherwell



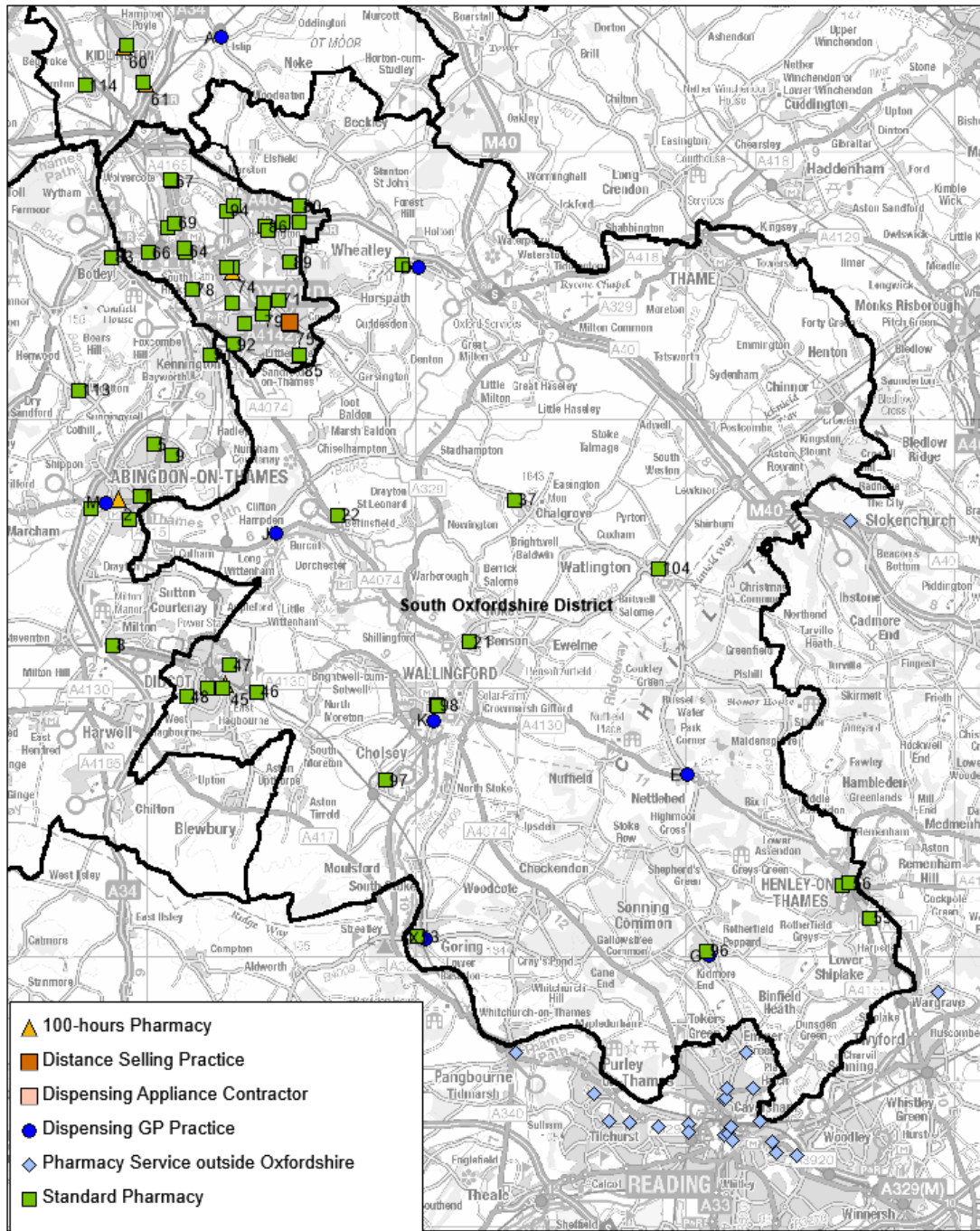
Map 3 - Pharmaceutical Services in Oxford City



- ▲ 100-hours Pharmacy
- Distance Selling Practice
- Dispensing Appliance Contractor
- Dispensing GP Practice
- ◇ Pharmacy Service outside Oxfordshire
- Standard Pharmacy

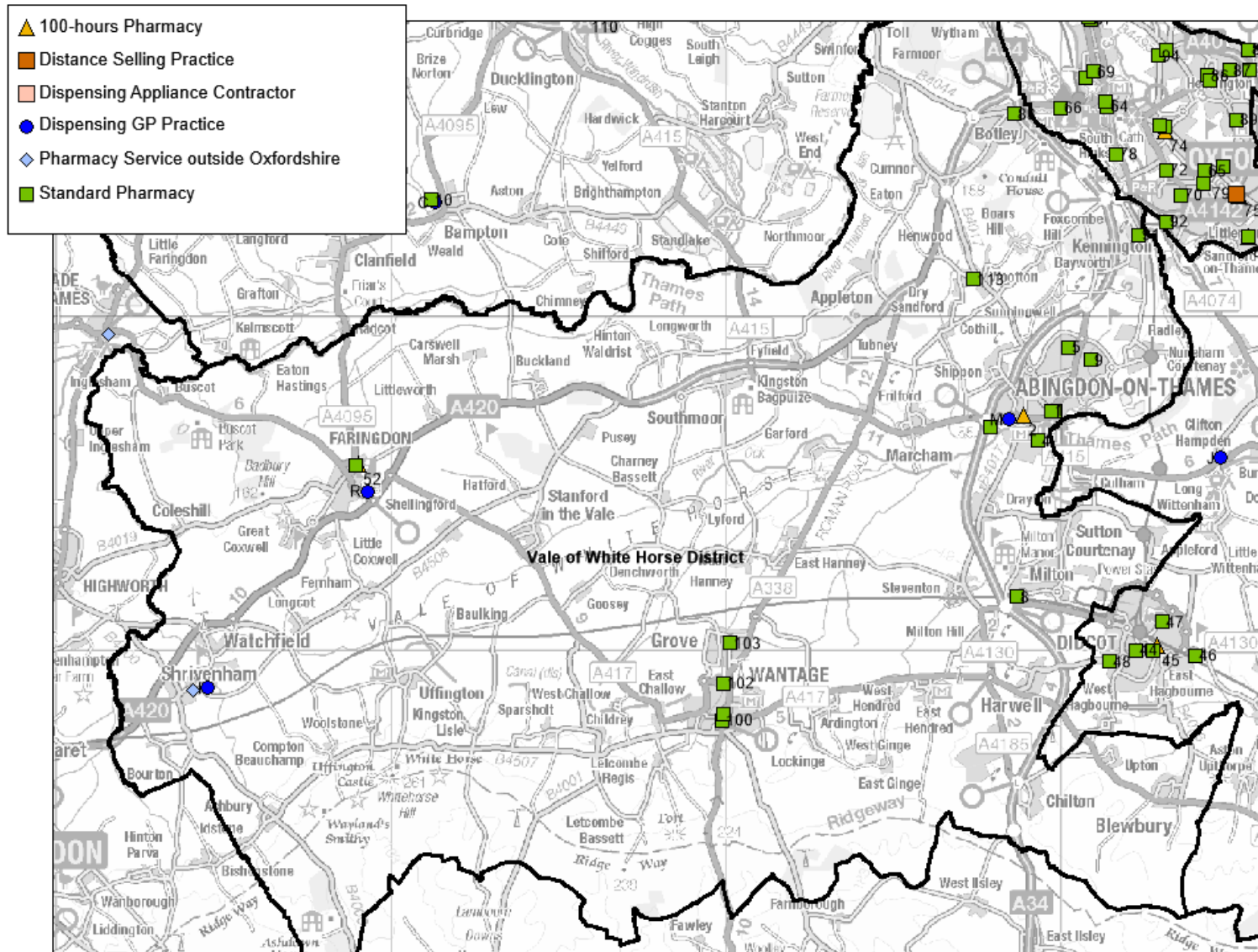
Reproduced from the Ordnance Survey mapping with the permission of the Controller of Her Majesty's Stationery Office © Crown Copyright. Unauthorised reproduction infringes Crown Copyright, and may lead to prosecution or civil proceedings.
 Oxfordshire County Council Licence No 100023343 2009
 ©Crown Copyright and database rights 2011 10023343RR

Map 4 - Pharmaceutical Services in South Oxfordshire



Reproduced from the Ordnance Survey mapping with the permission of the Controller of Her Majesty's Stationery Office © Crown Copyright. Unauthorised reproduction infringes Crown Copyright, and may lead to prosecution or civil proceedings.
 Oxfordshire County Council Licence No 100023343 2009
 ©Crown Copyright and database rights 2011 10023343RR

Map 5 - Pharmaceutical Services in Vale of White Horse



Reproduced from the Ordnance Survey mapping with the permission of the Controller of Her Majesty's Stationery Office © Crown Copyright. Unauthorised reproduction infringes Crown Copyright, and may lead to prosecution or civil proceedings. Oxfordshire County Council Licence No 100023343 2009 ©Crown Copyright and database rights 2011 10023343RR

Map 6 - Pharmaceutical Services in West Oxfordshire

